

# Snow Horse Stampede!

Phone 801-402-7350 <http://www.davis.k12.ut.us/162>

February 11, 2019

## Hope Week

**Monday:** Assembly by the author What Are You Thinking?

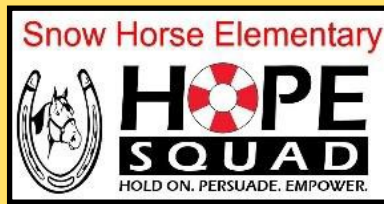
**Tuesday:** Dance off during lunch recess

**Wednesday:** Optional Super Hero dress-contest (simple costumes such as t-shirts, headbands etc.) Write a message of hope for the Hope Wall.

**Thursday:** Get your picture taken in front of the Hope Wall

**Friday:** Lifesaver cares passed out. "Would You Rather?" during lunch. Compliment cards passed out.

*\*suckers will be sold for \$1 during lunch the whole week. All proceeds go to the HOPE Squad.*



**Thank You and Congratulations to our 3rd Graders for an AMAZING program!**



## UPCOMING EVENTS:

### February 11th

2nd Grade Field Trip Clark Planetarium

### February 11th-15th

HOPE WEEK

### February 18th

President's Day NO SCHOOL

### February 21st

1:00 Community Council Mtg.

### February 22nd

Lego Robotics Registration Forms Due

### February 25th

Box Top Store during lunch

### February 25th-March 1

Reading Week

### February 26th

Box Top Store during lunch

### February 26th

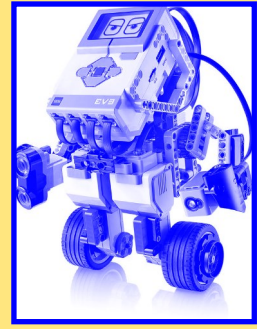
5th Grade Field Trip—Utah Symphony

## LUNCH MENU

<https://davis.nutrislice.com/menu/snow-horse/lunch/2018-09-10>

## Student Comment of The Week

One of my favorite things to do is teaching classes for teachers when they need someone to fill in. Last week I got to teach a kinder class for an hour. One of the students asked me, "So are you the principal right now or our substitute teacher?" I answered that I was both. The student said, "Well I don't think you're really allowed to be both, so you're probably going to have to decide what you are."



## **Lego Robotics**

We are starting our after school robotics class for 5th and 6th grade students on Monday, March 11th. Detailed information and the application can be found on the homepage of our school website. If your child is interested, please fill out the application and return it to the office by February 22nd. Space is limited—It's a first come, first serve basis.

## **School Safety—Upcoming Lockdown Drill**

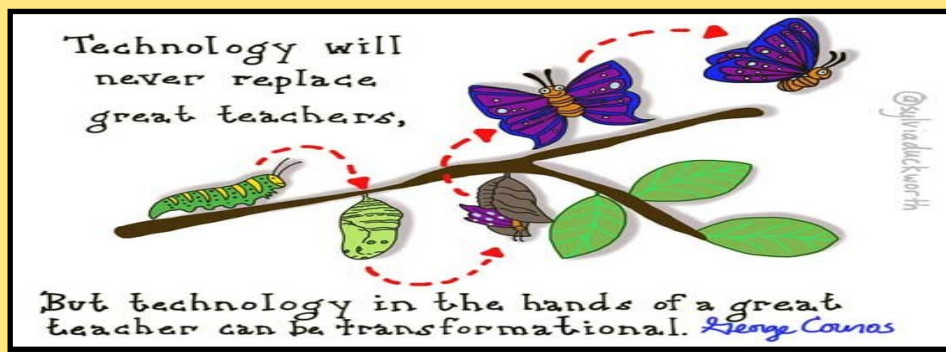
In December we had a scheduled lockdown drill. Teachers and students were told the time and date of the drill. While we learned some valuable things from the drill, we realized that we need an unannounced and more authentic drill that includes transition times like recess. This will help us plan for scenarios that we may not have otherwise anticipated. We recognize that lockdown drills create anxiety for some students. To help alleviate this, we will let them know we are having a practice drill the week of February 11th. When I announce the drill, I will be sure to tell them it's a practice drill.

## **School Survey**

School surveys are now available through your guardian dsd account. When you login to your account, there will be a message that says "Available Surveys." The surveys provide valuable information on what we can do to improve and also what's working that should be continued.







*Technology at Snow Horse is used to ENHANCE learning, not replace existing best practices that includes teacher instruction.*

**D - DELIBERATE:** Teachers carefully select the best digital resources to enhance and personalize student learning. They carefully plan how and when to insert technology into their instruction.

**R– REGULATED:** Teachers carefully regulate the amount of time students spend on a digital devices to ensure a balance with peer interaction and whole group instruction.

**I– INNOVATIVE:** Technology is creatively used to promote engagement and check for levels of understanding from ALL students. It provides teachers with immediate feedback regarding student understanding and progress. Among the others uses are—group problem solving and authentic writing practice. Mobile laptop labs provide writing practice that mirrors real-life writing.

**P– PERSONALIZED:** Quality adaptive software frees up teachers to target individual needs of students in a small group setting, while other students receive meaningful, personalized practice through adaptive software. Traditionally, all students worked on the same practice page at the same time and pace. Adaptive (personalized) software, when appropriate, replaces worksheet practice and offers immediate feedback to students and teachers.

### **Snow Horse Elementary Social Media Accounts**

We have new social media accounts this year that are designed to share reminders, great things happening in our school, as well as helpful articles on parenting and community resources. We would love to have you like and follow us! You can either click the social media buttons at the bottom of our school website, or get to our Snow Horse Elementary accounts with these links:

**Facebook:** <https://www.facebook.com/Snow-Horse-Elementary-School-2654121574813275/>

**Instagram:** <https://www.instagram.com/snowhorseelementary/>

**Twitter:** [http://twitter.com/school\\_snow](http://twitter.com/school_snow)

### **Drop-Off Pick Up Procedures Video**

Please take a moment to review this video on our school website. It's a quick instructional video on how to keep students safe and the flow of traffic moving during drop off/pick up times. Thank You!

<https://snowhorse.davis.k12.ut.us/>



## Change Your Words, Change your Mindset—Snow Horse Students Have a Growth Mindset.

School-wide we've been focusing on growth mindset. Here are some phrases that students hear at school and are also helpful to use at home.

Instead of "This is too hard." - "This may take some time and effort"

Instead of "I'm not good at this." - "What am I missing?"

Instead of "I'll never be as smart as her." - "I'm going to figure out what she does and try it."

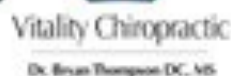


Please help us raise money for Snow Horse Elementary by *attaching your Smith's Fresh Values Card to Snow Horse Elementary.*

1. Go To [www.smithsinspiringrewards.com](http://www.smithsinspiringrewards.com)
2. Click on "my account" In "account summary" click on "edit rewards" and input your rewards card number.
3. Click "Edit Community Rewards" (last selection on Account Summary) Enter the first letters of Snow Horse Elem. Select "Snow Horse Elementary" and click "enroll"



## TECH THE HALLS SPONSORS



HAIR IN THE 801

