

# Snow Horse Stampede!

Phone 801-402-7350    <http://www.davis.k12.ut.us/162>

December 3, 2018

## Davis School District has an online library that includes digital and audio books.

It's a great way to make books more accessible to students. And, with holiday travel just around the corner, audio books are great for road trips.



<https://davisut.libraryreserve.com/10/45/en/Default.htm>

## Questions That Will Help You Get More Than A "Yes", "No" or "Don't Know" Response From Your Student When You Ask About Their School Day:

1. Tell me about the best part of your day.
2. What was the most challenging thing you had to do today?
3. Did any of your classmates do anything funny?
4. Tell me about what you read in class.
5. Who did you play with today? What did you play?
6. Who did you sit with at lunch?
7. Can you show me something you learned (or did) today?

## UPCOMING EVENTS:

### December 4th

3rd Grade Field Trip to Defay Orthodontics

### December 7th

Newbery Club during 5th&6th Lunch

1:30 Book Battle Meeting

### December 11th

9:15 5th Grade Field Trip Galapagos IMAX

### December 20

1:25 EARLY OUT

December 20th-January 1st

**WINTER BREAK-NO SCHOOL**

## LUNCH MENU

<https://davis.nutrislice.com/menu/snow-horse/lunch/2018-09-10>

## Student Comment of The Week

Students believe ice packets from the office are a cure-all for any ailment. Last week, a student came into the office and asked for an ice pack. I asked "Where did you get hurt?" She said, "My mom and dad are leaving on a long vacation, so it's my heart is what's hurting."



Critiquing and then voting  
for award books in library

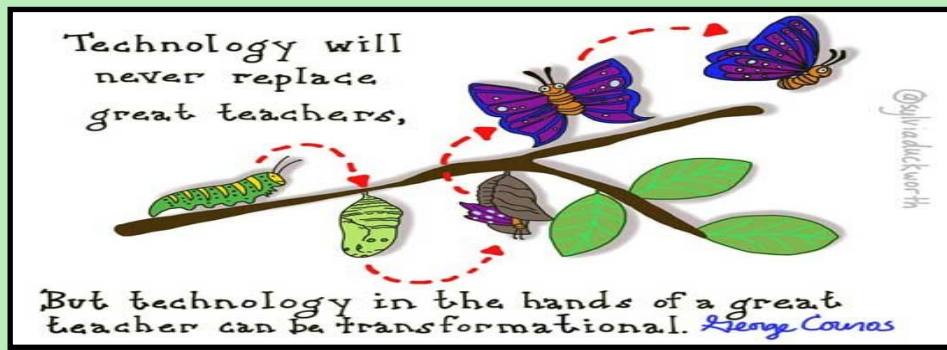






Degas Sculptures In Art Class





*Technology at Snow Horse is used to **ENHANCE** learning, not replace existing best practices that includes teacher instruction.*

**D - DELIBERATE:** Teachers carefully select the best digital resources to enhance and personalize student learning. They carefully plan how and when to insert technology into their instruction.

**R– REGULATED:** Teachers carefully regulate the amount of time students spend on a digital devices to ensure a balance with peer interaction and whole group instruction.

**I– INNOVATIVE:** Technology is creatively used to promote engagement and check for levels of understanding from ALL students. It provides teachers with immediate feedback regarding student understanding and progress. Among the others uses are—group problem solving and authentic writing practice. Mobile laptop labs provide writing practice that mirrors real-life writing.

**P– PERSONALIZED:** Quality adaptive software frees up teachers to target individual needs of students in a small group setting, while other students receive meaningful, personalized practice through adaptive software.

Traditionally, all students worked on the same practice page at the same time and pace. Adaptive (personalized) software, when appropriate, replaces worksheet practice and offers immediate feedback to students and teachers.

### **Snow Horse Elementary Social Media Accounts**

We have new social media accounts this year that are designed to share reminders, great things happening in our school, as well as helpful articles on parenting and community resources. We would love to have you like and follow us! You can either click the social media buttons at the bottom of our school website, or get to our Snow Horse Elementary accounts with these links:

**Facebook:** <https://www.facebook.com/Snow-Horse-Elementary-School-2654121574813275/>

**Instagram:** <https://www.instagram.com/snowhorseelementary/>

**Twitter:** [http://twitter.com/school\\_snow](http://twitter.com/school_snow)

### **Book Battles**

Book Battle registration is ongoing. Your student can pick up a form in the library or from Mrs. Leu's webpage.

If you tried to put your payment on-line in My DSD earlier and were not able to, there was a technical problem. You can now go in and pay for your student.

We still need volunteers to help with the Friday meetings. Please go here to sign-up for the days you can help: <https://docs.google.com/spreadsheets/d/1iLSGjBLirLOGjAykVNQRpvCjTPENQzVAORKdbOQWZes/edit?usp=sharing>



## Change Your Words, Change your Mindset—Snow Horse Students Have a Growth Mindset.

School-wide we've been focusing on growth mindset. Here are some phrases that students hear at school and are also helpful to use at home.

Instead of "This is too hard." - "This may take some time and effort"

Instead of "I'm not good at this." - "What am I missing?"

Instead of "I'll never be as smart as her." - "I'm going to figure out what she does and try it."

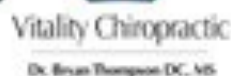


Please help us raise money for Snow Horse Elementary by *attaching your Smith's Fresh Values Card to Snow Horse Elementary.*

1. Go To [www.smithsinspiringrewards.com](http://www.smithsinspiringrewards.com)
2. Click on "my account" In "account summary" click on "edit rewards" and input your rewards card number.
3. Click "Edit Community Rewards" (last selection on Account Summary) Enter the first letters of Snow Horse Elem. Select "Snow Horse Elementary" and click "enroll"



## TECH THE HALLS SPONSORS



HAIR IN THE 801

